



## **DAILY CURRENT AFFAIRS 11-08-2025**

### **GS-1**

1. Muthuvan Tribe
2. Khelo India ASMITA

### **GS-2**

3. PM E-Drive Subsidy Scheme

### **GS-3**

4. India's first State-of-the-Art Animal Stem Cell Biobank and Laboratory
5. Barda Wildlife Sanctuary

## **Muthuvan Tribe**

**Syllabus: GS-1; Tribes of India**

### **Context**

- A rare **three-day convention** was held by the Muthuvan community to **preserve their language and culture** as part of the **International Day of the World's Indigenous Peoples**.
- Efforts are being made to document their **traditional knowledge** and **sustainable coexistence with wildlife**.



### **Key Facts About the Muthuvan Tribe**

- **Also Known As:** Mudugar
- **Location:** Hill forests of Kerala (Idukki district) and Tamil Nadu (Coimbatore, Dindigul, Theni districts)
- **Population:** Estimated around 10,000–15,000
- **Language:** Muthuvan (a Dravidian dialect with Malayalam and Tamil influences)
- **Subgroups:**
  - **Malayalam Muthuvan** (influenced by Malayalam)
  - **Pandi Muthuvan** (influenced by Tamil)

## Social Organization

- **Clan System (Koottams):**
  - Divided into **six clans**, each further split into sub-clans.
  - Functions include **marriage alliances, social hierarchy, and ancestry tracking**.
- **Marriage Rules:**
  - **Community endogamy** (marrying within the tribe)
  - **Clan exogamy** (marrying outside one's clan)
- **Governance (Kani System):**
  - Each village is led by a '**Kani**' (**chief**) who oversees administration and justice.
  - Traditional punishments are given for breaking customs.

## Religion & Beliefs

- **Animism & Spirit Worship:**
  - Worship forest gods and ancestral spirits.
  - Believe their ancestors were the first to migrate to the hills.
- **Sacred Groves:** Protect certain forest areas as abodes of deities.

## Occupation & Livelihood

- **Shifting Cultivation (Virippukrishi):**
  - Grow crops like **ragi, maize, thina, varagu, chama rice, sweet potato, and vegetables**.
  - Mostly for **self-consumption**, not commercial sale.
- **Traditional Medicine:**
  - Expertise in **herbal remedies**, passed down secretly through generations.

## Challenges & Conservation

- **Deforestation** and **government restrictions** threaten their traditional farming.
- **Cultural erosion** due to modernization and migration.
- NGOs and government schemes aim to support their **livelihood and heritage preservation**.

## **Khelo India ASMITA**

**Syllabus: GS-1: Indian Society - National Integration – Sports.**

### **Context:**

- Inauguration of the *Khelo India ASMITA Football League 2025–26* in Jalgaon, Maharashtra.
- **Significance:** Major step towards **affirmative action in sports** to boost women's participation, particularly from underrepresented communities.

### **About Khelo India ASMITA**

- **Full Name:** *Affirmative Sports Mechanism for Inclusive Talent Advancement* (ASMITA) – initiative under **Khelo India programme**.
- **Launch Year:** 2025–26.
- **Inaugural Event:** Football league in Jalgaon, Maharashtra.
- **Nodal Ministry:** Ministry of Youth Affairs and Sports.
- **Supporting Institutions:**
  - Sports Authority of India (SAI)
  - All India Football Federation (AIFF)
  - Western India Football Association (WIFA)



### **Aims & Objectives**

- **Increase women's participation** in sports at the grassroots level.
- **Address gender imbalance** in sports representation.
- **Foster social inclusion** by engaging:

- Tribal communities
- Rural backgrounds
- Minority groups
- **Nation-building** through women's empowerment in sports.

### Key Features

- **Target Group**
  - Girls aged **13 years and under**.
  - Inclusion of *first-time players* and *hidden talent*.
- **Affirmative Action**
  - Priority to marginalised communities for **inclusive participation**.
- **Platform for Exposure**
  - Competitive leagues for **visibility** and **scouting opportunities**.
- **Policy Alignment**
  - Integrated with *Khelo Bharat Niti* – India's long-term sports development strategy.
- **Institutional Support**
  - Collaboration with national and state sports bodies for **structured development**.
- **Breaking Stereotypes**
  - Encouraging girls to challenge **societal norms** and become **role models**.

### Significance

- Promotes **grassroots sports culture** for girls.
- Enhances **gender equity** in sports representation.
- Strengthens India's **sports talent pipeline** for future national and international competitions.
- Contributes to **social cohesion** and **women's empowerment**.

## **PM E-Drive Subsidy Scheme**

**Syllabus: GS-2: Governance - Schemes and Policies**

### **Context:**

- The Central Government has extended the ₹10,900 crore PM E-Drive subsidy scheme by two years until 2027-28.

### **PM E-Drive Subsidy Scheme**

#### **Introduction**

- **Type:** National EV incentive programme.
- **Aim:** Promote adoption, manufacturing, and charging infrastructure for electric vehicles (EVs), with focus on e-buses and heavy EVs.
- **Launched:** 1 October 2024, replacing *Electric Mobility Promotion Scheme (EMPS-2024)*.
- **Extended:** By 2 years (till 2027-28) due to under-utilisation of funds.
- **Administered by:** Ministry of Heavy Industries.

#### **Duration & Budget**

- **Period:** Till **31 March 2028** or until funds are exhausted.
- **Total Outlay:** ₹10,900 crore.
  - ₹3,679 crore – Demand incentives for EVs.
  - ₹7,171 crore – E-buses, charging infra, and testing facilities.

#### **Objectives**

- Accelerate **EV penetration** in public transport & logistics.
- Reduce **upfront costs** of EVs for consumers.
- Expand **charging infrastructure** to address range anxiety.
- Support **domestic manufacturing** under *Atmanirbhar Bharat*.



## Key Features

### Demand Incentives (FY25 → Halved in FY26)

- **2-wheelers:** ₹5,000/kWh (max ₹10,000/vehicle).
- **E-rickshaws & e-autos:** ₹5,000/kWh (max ₹25,000–₹50,000).
- **Electric trucks (3.5–55 tonnes):** ₹5,000/kWh or 10% of ex-factory price.
- **Electric ambulances:** ₹500 crore allocation; guidelines by 2026.

### Focus on E-Buses

- Deployment in **9 cities** with population > 40 lakh.

### Charging Infrastructure (₹2,000 crore allocation)

- 22,100 fast chargers for four-wheelers.
- 1,800 chargers for buses.
- 48,400 chargers for two- & three-wheelers.

### Testing Upgrades

- Strengthening **EV testing & certification** facilities.

### Policy Integration

- Complements GST rate cuts, *Sec 80EEB income tax benefits*, and **PLI schemes** for batteries & EV manufacturing.

### Coverage

- **Vehicles:** Electric 2-wheelers, 3-wheelers, trucks, ambulances, and buses.
- **Infrastructure:** Charging stations in urban areas & along highways.

### Significance

- Supports **climate change mitigation & energy security**.
- Encourages **domestic EV ecosystem** development.
- Boosts **urban mobility** and **public transport electrification**.



## **India's first State-of-the-Art Animal Stem Cell Biobank and Laboratory**

**Syllabus: GS-3: Science and Technology – Biotechnology.**

### **Context:**

- Recently inaugurated by the Union Minister at the **National Institute of Animal Biotechnology (NIAB), Hyderabad.**
- First such facility in India dedicated to **animal stem cell preservation, research, and application** in livestock health and productivity.

### **Location & Institutional Details**

- **Location:** Hyderabad, Telangana
- **Institution:** National Institute of Animal Biotechnology (NIAB)
- **Administrative Control:** Department of Biotechnology (DBT), Ministry of Science & Technology
- **Support:** National Biopharma Mission (NBM) of DBT–BIRAC

### **Objectives & Aims**

- Advance **veterinary regenerative medicine** and **cellular therapies.**
- Support the **One Health** approach (integration of human, animal, and environmental health).
- Strengthen biotechnology-led agricultural productivity.
- Provide long-term **stem cell storage and management** for research and clinical use.

### **Key Features**

- **Advanced Infrastructure**
  - Stem cell culture unit
  - 3D bioprinter
  - Bacterial culture laboratory
  - Cryostorage facilities
  - Autoclave rooms
- **Support Systems**
  - Modern air handling units
  - Uninterrupted power backup



➤ **Research Areas**

- Regenerative medicine for livestock
- Disease modelling for brucellosis, mastitis, and other diseases
- Tissue engineering
- Reproductive biotechnology

**Expansion Plans**

- Establishment of a repository to **store and manage animal stem cells and derivatives**.
- Facilitate long-term **multi-institutional research collaborations**.

**Significance**

- Boosts livestock productivity and improves farmer incomes.
- Supports the **Evergreen Revolution** in animal husbandry.
- Positions India as an **early mover in biotechnology-led agriculture**.
- Strengthens veterinary health innovation and disease management capacity.

## **Barda Wildlife Sanctuary**

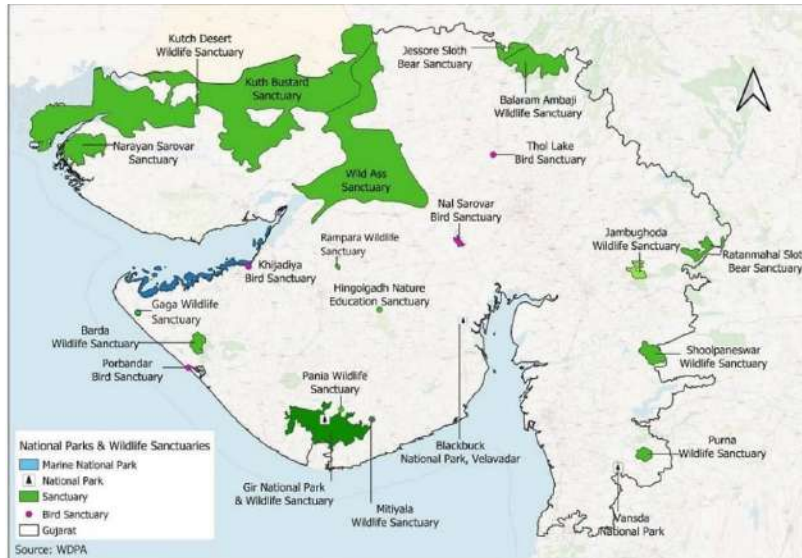
**Syllabus: GS-3; Biodiversity**

**Context**

- **World Lion Day** was celebrated at Barda in collaboration with MoEF&CC and Gujarat's Forest Department.

**Know More**

- **Location:** Gujarat, India (Devbhumi Dwarka district).
- **Rivers:** Bileshvary River, Joghri River.
- **Dams:** Khambala and Fodara.
- **Tribes:** Home to Maldharis, Bharvads, Rabaris, and Gadhvis.



## Key Features

- **Gir-Barda Project (1979):** Aims to establish Barda as a second home for **Asiatic Lions** (currently endemic to Gir Forest).
- **Biodiversity Hotspot:** Supports diverse flora and fauna.

## Flora

- 650+ plant species, including medicinal plants like Rayan, Babul, Ber, Jamun, Bamboo, etc.

## Fauna

- **Mammals:** Leopard, hyena, wild boar, wolf, jackal, blue bull.
- **Birds:** Rare spotted eagle, crested hawk eagle.

## Asiatic Lion Conservation

- **Scientific Name:** *Panthera leo persica*.
- **Conservation Status:**
  - **IUCN:** Vulnerable
  - **CITES:** Appendix I
  - **WPA 1972:** Schedule I