



## **DAILY CURRENT AFFAIRS 29-04-2026**

### **Mapping Perspective**

1. Luzlon Island

### **Prelims Perspective**

2. Blackbuck
3. Doppler Weather Radar

### **Mains Perspective**

4. Electoral Roll Revision
5. Bnei Menashe Explained

## Luzlon Island

Syllabus: GS-1: World Geography – Islands.

Context:

- China's military Southern Theater Command conducted **live-fire drills, rapid maneuvers, and sea-air coordination exercises** in waters east of Luzon Island

**Luzlon Island – Overview**

- **What it is?**
  - It is the most important island of the Philippines, housing more than half of the country's total population; largest and most economically significant island in the Philippine archipelago
- **Location:**
  - Situated in the northern part of the Philippines; bounded by **Philippine Sea (east), South China Sea (west), Luzon Strait (north)** separating it from Taiwan
- **History:**
  - Significantly impacted by the **1991 eruption of Mount Pinatubo**, which displaced hundreds of thousands and altered the geography of its central plain



### Key Features

- **Urban Centres:**
  - Site of **Manila (national capital), Quezon City, Baguio, Batangas** and other major hubs
- **Topography:**
  - Features major mountain ranges—**Cordillera Central, Sierra Madre, Zambales Mountains**; highest peak is **Mount Pulog (9,612 feet)**
- **Volcanic Activity:**
  - Contains active volcanic cones, notably the near-perfect **Mayon Volcano (Bicol Peninsula)**
- **Water Bodies:**
  - Home to **Laguna de Bay (largest lake)** and major rivers—**Cagayan, Abra, Pampanga**
- **Dimensions:**
  - Represents ~one-third of Philippines' land area; approx. **460 × 140 miles**

### Significance

- Leads the Philippines in **industry and agriculture**, especially **rice, corn, coconuts, sugarcane production**
- Central plain north of Manila serves as the **major grain-producing region**
- Northern areas known for **ancient rice terraces of the Ifugao people**

## **Blackbuck**

### Syllabus: Prelims Bits – Wildlife species in news.

#### Context:

- Barnawapara Wildlife Sanctuary has reported a steady increase in its blackbuck population following a reintroduction programme initiated in 2018

#### About Blackbuck

- It is a medium-sized antelope native to India and Nepal
- **Habitat:** The blackbuck mostly lives in open grasslands, dry scrub areas, and thinly forested areas
- **Distribution:** It is widespread in the states of Rajasthan, Gujarat, Madhya Pradesh, Tamil Nadu, Odisha, and other areas throughout peninsular India

- It has been declared as the state animal by the governments of Punjab, Haryana, and Andhra Pradesh



### Characteristics of Blackbuck

- It is known for its beautiful spiraling horns
- Males are characterised by dark coats and spiral horns, while females are generally lighter in colour and often lack horns
- Young males and females are lighter in color, often yellowish-brown
- They have very good eyesight and are also very fast runners, which comprise their main defense against predators
- They are gregarious and social animals with herds generally ranging from 5 to 50 animals

### Conservation Status

- Blackbuck Conservation Status: It is classified as 'Least Concern' under the IUCN Red List

## **Doppler Weather Radar**

### Syllabus: GS-3: General Science

#### Context:

- Recently, Indian Institute of Tropical Meteorology commissioned a new **X-band Doppler Weather Radar** at Mahabaleshwar under Mission Mausam

## About Doppler Weather Radar (DWR)

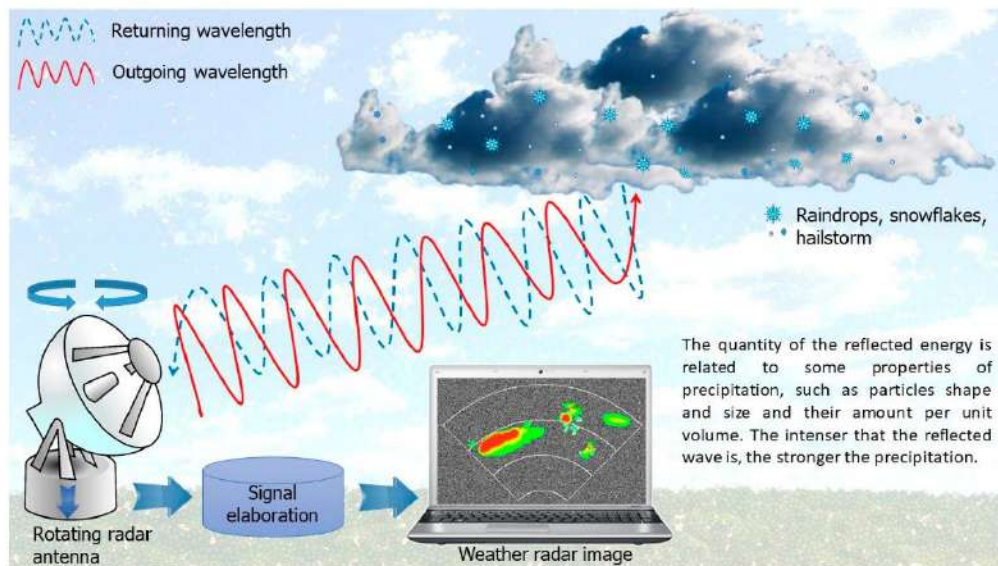
- It is a specialized radar that uses the Doppler Effect to produce velocity data about objects at a distance
- These radar systems can provide information regarding the movement of targets as well as their position

## Types of Weather Radar Bands

- Varying frequencies like **S-band, C-band and X-band** — are commonly used by the India Meteorological Department

## Working of Doppler Weather Radars

- In radars, a beam of energy, called radio waves, is emitted from an antenna
- When this beam strikes an object in the atmosphere, the energy scatters in all directions, with some reflecting directly back to the radar
- The larger the object deflecting the beam, the greater is the amount of energy that the radar receives in return
- Observing the time required for the beam to be transmitted and returned to the radar allows weather forecasting departments to “see” raindrops in the atmosphere, and measure their distance from the radar



## Applications of Doppler Weather Radars

### Weather System Monitoring

- It is used to track the movement of weather systems and cloud bands, and gauge rainfall over its coverage area of about **500 km**

### Specific Functional Uses

- **X-band radar** is used to detect thunderstorms and lightning
- **C-band radar** helps in cyclone tracking

## **Electoral Roll Revision**

### **Syllabus: GS-2: Indian Polity – Elections**

#### **Context:**

- **Special Intensive Revision (SIR)** has led to **reduced voter lists but higher turnout percentages** across several states, indicating a shift in electoral dynamics.

#### **Electoral Roll in India: Basics and Importance**

- **Electoral Roll:** constituency-wise list of eligible voters maintained by the **Election Commission of India (ECI)**.
- Forms the **foundation of electoral democracy**, as only registered voters can exercise the right to vote.
- **Constitutional mandate:** all citizens above 18 years, subject to disqualifications, must be included in the roll.
- **Accuracy of rolls** is crucial for ensuring **free, fair, and credible elections**.

#### **Types of Electoral Roll Revisions**

- **Two main processes of updation:**
  - **Summary Revision:** conducted annually with **limited corrections and additions**.
  - **Special Intensive Revision (SIR):** involves **comprehensive re-verification**, fresh enumeration and documentation.
- **SIR characteristics:** more rigorous, aims to **eliminate accumulated inaccuracies** over time.

#### **Growth of India's Electorate**

- Significant expansion since independence:
  - **1951:** ~17 crore voters → **Recent years:** over 96 crore voters.
- Reflects **population growth and improved voter registration**.
- At one stage, electorate projected to **approach 100 crore**, highlighting the scale of India's democracy.

#### **News Summary: Impact of Special Intensive Revision (SIR)**

### 1. Reduction in Electoral Roll Size

- Significant trimming due to removal of **ASDD voters (Absent, Shifted, Dead, Duplicate)**.
- Across **13 States/UTs**: electors declined from ~51 crore to **below 46 crore**.
- Marks departure from the **usual trend of continuous electorate growth**.

### 2. Higher Voter Turnout Despite Smaller Electorates

- **Tamil Nadu**: turnout over **85%**.
- **West Bengal**: turnout above **90% in certain phases**.
- Reason: removal of **“ghost voters”**, leading to **higher turnout percentage on reduced base**.

### 3. Reasons for Deletion of Names

- Major cause: removal of **ASDD entries**.
- Additional factors:
  - Non-submission of **enumeration forms**
  - Inability to **verify identity**
  - Failure to meet **eligibility criteria**
- In several cases, **burden of proof shifted to citizens** to re-establish eligibility.

### 4. Partial Recovery through Fresh Enrolment

- Final rolls show **recovery due to new registrations and corrections**.
- Example: **Uttar Pradesh**
  - Draft: 15.44 crore → 12.55 crore
  - Final: increased to **13.39 crore**
- Indicates SIR is **not purely deletion**, but also **re-inclusion of eligible voters**.

### 5. Possible Decline in National Electorate Size

- After covering ~60 crore voters, electorate declined by **~6 crore**.
- On nationwide completion, total electorate may fall to **~90 crore**.
- Suggests **reversal of earlier expansion trend**.

### 6. Concerns over Exclusion and Disenfranchisement

- Risk of **accidental exclusion of genuine voters**, especially **vulnerable groups lacking documentation**.

- Strict verification may lead to **disenfranchisement on technical grounds**.

### 7. Need for Balancing Accuracy and Inclusion

- **SIR improves accuracy**, but must ensure **no eligible voter is excluded**.
- Key challenge for ECI: **balance verification with inclusion and restore public confidence**.

## **Bnei Menashe Explained**

**Syllabus: GS-2: International Relations & GS-1: Tribes.**

### **Context:**

- Around 250 members of the B'nei Menashe from Manipur and Mizoram recently arrived in Tel Aviv under an official relocation programme – first such batch supported by the Israeli government
- The community, numbering about 7,000 and drawn largely from Mizo and Kuki tribes, claims descent from one of the “ten lost tribes of Israel”
- Migration to Israel has been ongoing since the 1990s, but this marks a new phase of state-backed resettlement, with more groups expected



### **The ‘Lost Tribes of Israel’: Origins & B’nei Menashe Claim Historical Background**

- Around 722 BCE, Assyrian conquest of Israel led to exile of ten tribes from northern Israel – Reuben, Simeon, Dan, Naphtali, Gad, Asher, Issachar, Zebulun, Ephraim, Manasseh
- Their descendants became known as the “lost tribes of Israel”, with uncertain whereabouts

### **Global Search for Descendants**

- Jewish communities worldwide have searched for traces of these tribes, including in the Indian subcontinent where several groups claim ancestral links

### **B’nei Menashe Claim**

- B’nei Menashe of Manipur and Mizoram believe they descend from the tribe of Manasseh (largest among lost tribes)
- Name literally means “sons of Manasseh”

### **Migration Narrative & Cultural Link**

- According to belief, ancestors migrated eastward over centuries via Persia (modern Iran) and Afghanistan before settling in Northeast India

### **Role of Religious Transformation**

- Belief in Jewish ancestry gained traction after conversion to Christianity, exposing them to biblical narratives and shaping historical interpretation

### **From Christianity to Judaism: Evolution of Identity**

#### **Missionary Influence**

- Roots trace back to 19th-century Protestant missionary activity introducing the Bible
- Pre-existing belief in messianic figures facilitated spread of Christianity and exposure to Israelite history

#### **Revivalist Movements & Context**

- Christian revivalist movements (1930s–1960s) in Mizoram + regional unrest in 1960s encouraged reinterpretation of identity and search for deeper roots

#### **Turning Point – Vision of Ancestry**

- In 1951, Mizo mystic Challianthanga (Mela Chala) claimed a dream that Mizo, Kuki, and Chin tribes were descendants of ancient Israelites
- This catalysed shift toward Jewish identity

#### **Structured Movement toward Judaism**

- From late 1970s, organised shift toward Judaism through research and outreach to Jewish communities
- Growing interest in reconnecting with Israel

### **Role of Organisations**

- Israeli organisation Amishav played key role in guiding religious transformation and facilitating ties
- Mizo Israel Zionist Organization (1974) institutionalised efforts
- By 1980s, many adopted Judaism, though significant population remains Christian

### **Re-establishing Links with Israel: Recognition, Migration & Challenges**

#### **Recognition & Scientific Debate**

- Efforts highlighted oral histories and cultural practices linking to Israel
- In 2005, Chief Rabbinate of Israel recognised them as “Lost Seed of Israel”
- Genetic studies (including Technion – Israel Institute of Technology) remained inconclusive → debate unresolved

#### **Migration Policies**

- Post-recognition, Israel allowed gradual migration in small batches, with intermittent pauses
- November 2025: Israeli government approved funding for relocation of nearly 5,000 members → major step in formal resettlement

#### **Challenges in Israel**

- Migrants face racial discrimination and integration challenges
- Issues due to differences in physical features and cultural background

#### **Other ‘Lost Tribes’ Claims**

##### **B’nei Ephraim**

- Another Indian group claiming descent from tribe of Ephraim
- Migration narrative: ancestors reached India via Central Asia about a thousand years ago

##### **Socio-cultural Dimension**

- Belong largely to Dalit community
- Claim to Jewish ancestry sometimes interpreted as means to challenge caste discrimination and seek social mobility, including recognition from global Jewish communities