



DAILY CURRENT AFFAIRS 30-05-2026

Mapping Perspective

1. Fiji

Prelims Perspective

2. PM-WANI
3. Gynacantha khasiaca

Mains Perspective

4. National Health Accounts (NHA) Estimates for India 2022-23
5. SARTHAK-PDS

Fiji

Syllabus: GS-1; Geography- Mapping, GS-2; International Relations

Context

The Quad's recent announcement to develop a "model" port in Fiji has renewed hopes for funding the country's proposed \$1.82 billion relocation of its main dock.



About Fiji:

- Fiji is an island country located in the **South Pacific Ocean**, northeast of New Zealand and southwest of Hawaii, surrounding the **Koro Sea**.
- It consists of nearly 300 islands, of which around 100 are inhabited, and does not share land borders with any country.
- The islands are mainly **volcanic in origin**, with coral formations and sedimentary deposits shaping the landscape.
- Fiji's terrain includes mountain ranges, plateaus, lowlands, and coastal plains, while nearly half of the country remains forested.
- The **capital city, Suva**, is situated on Viti Levu, the country's largest island, which contains **Mount Tomanivi** — Fiji's highest peak at 1,324 metres.
- The population is predominantly of mixed **Melanesian-Polynesian** ancestry, along with a significant South Asian community.

- **English, Fijian, and Hindi** are the major languages, while Christianity, Hinduism, and Islam are widely practiced religions.
- Fiji's economy is among the most developed in the Pacific region and is largely dependent on tourism and sugar exports.
- Fiji gained independence from British colonial rule in 1970 and follows a **parliamentary democratic system** under the 2013 Constitution, despite experiencing coups in 1987, 2000, and 2006.
- Currency: Fiji Dollar.

PM-WANI

Syllabus: GS-3; Science & Technology

Context:

The Department of Telecommunications (DoT) has recently introduced new user-friendly reforms under the PM-WANI framework to expand **public Wi-Fi accessibility** across India.

About PM-WANI:

- **PM-WANI (Prime Minister's Wi-Fi Access Network Interface)** was launched by the Department of Telecommunications in December 2020.
- The initiative aims to promote widespread public Wi-Fi hotspots and strengthen digital communication infrastructure, especially in rural and underserved regions.

Objectives:

- To bridge the **digital divide** by improving affordable internet access in remote areas.
- To support participation in **the digital economy** through **low-cost connectivity**.
- To encourage **local entrepreneurship** by enabling individuals and shopkeepers to provide Wi-Fi services.

Key Components of PM-WANI:

- **Public Data Office (PDO):** Establishes and operates WANI-compliant public Wi-Fi hotspots without requiring a DoT license. Small shops and local businesses can function as PDOs and earn additional income by providing internet services.

- **Public Data Office Aggregator (PDOA):** Aggregates multiple PDOs and manages functions related to authorization and accounting.
- **App Provider:** Develops applications that help users locate nearby WANI-compliant Wi-Fi hotspots and access internet services.
- **Central Registry:** Maintains records of PDOs, PDOAs, and App Providers. It is managed by the Centre for Development of Telematics (C-DoT).

Gynacantha khasiaca

Syllabus: GS-3; Environment & Ecology

Context:

Citizen scientists have recently rediscovered *Gynacantha khasiaca*, a rare dragonfly species, in the **Namdapha National Park** and Tiger Reserve of Arunachal Pradesh.



About Gynacantha khasiaca:

- *Gynacantha khasiaca*, commonly called the **long-tailed duskhawker**, is a rare species of **dragonfly**.
- The species has been recorded in Arunachal Pradesh for the **first time in over 110 years**, with its last confirmed sighting dating back to 1914 in the **Abor Hills region**.

- Outside India, it has been reported only from isolated locations in **Nepal, Myanmar, and Bangladesh**.
- In India, sporadic sightings have earlier been recorded from **Assam, Meghalaya, Uttarakhand, West Bengal, and Maharashtra**.
- The dragonfly inhabits **dense rainforest ecosystems** and is known for its **elusive behaviour**, often resting vertically beneath vegetation.
- It possesses distinctive features such as pale blue-green eyes, a bright green thorax with dark stripes, amber-tinted transparent wings, and a long black-tipped abdomen.
- The species is currently classified as **“Data Deficient” on the IUCN Red List** due to insufficient scientific data regarding its population and distribution.

National Health Accounts (NHA) Estimates for India 2022-23

Syllabus: GS-2: Social Justice – Health Sector.

Context:

- The Health Ministry recently released the National Health Accounts (NHA) estimates for India 2022-23.

About National Health Accounts (NHA) Estimates

- NHA estimates are released annually and provide a time-series analysis of actual health expenditure incurred by the government, private sector, and other sources.
- The 2022-23 estimates mark the 10th edition in the series that began in 2013-14.
- Prepared by the National Health Accounts Technical Secretariat (NHATS) under the National Health Systems Resource Centre, Ministry of Health and Family Welfare.
- Uses the internationally accepted System of Health Accounts (2011) framework.

Key Highlights

Increase in Government Health Expenditure

- Government health expenditure increased from Rs 1.30 lakh crore in 2013-14 to Rs 3.85 lakh crore in 2022-23.
- Share of government health expenditure in GDP increased from 1.15% in 2013-14 to 1.43% in 2022-23; according to the new GDP series (base year 2022-23), it stands at 1.48%.
- Share of government health expenditure in general government expenditure increased from 3.78% to 4.89%.

Increase in Per Capita Health Spending

- Per capita government health expenditure increased nearly 2.7 times, from Rs 1042 in 2013-14 to Rs 2786 in 2022-23.

Rise in Government Share in Total Health Expenditure

- Government health expenditure as a share of total health expenditure increased from 28.6% in 2013-14 to 43.7% in 2022-23.
- Increase in public spending contributed to a substantial decline in household out-of-pocket expenditure (OOPE).

Decline in Out-of-Pocket Expenditure (OOPE)

- OOPE as a share of total health expenditure declined from 64.2% in 2013-14 to 43.4% in 2022-23.

Increase in Social Security Expenditure (SSE)

- Share of SSE in total health expenditure increased from 6% in 2013-14 to 9.9% in 2022-23.
- SSE includes:
 - Government-funded health insurance schemes such as AB PM-JAY
 - Medical reimbursements to government employees
 - Social health insurance programmes

Growth in Private Health Insurance

- Share of private health insurance in total health expenditure increased from 3.4% to 9.2%.

Increase in Primary Healthcare Expenditure

- Government expenditure on primary healthcare more than doubled from Rs 0.5 lakh crore in 2013-14 to Rs 1.4 lakh crore in 2022-23.

SARTHAK-PDS

Syllabus: GS-3: Indian Economy – Agriculture and Food Security.

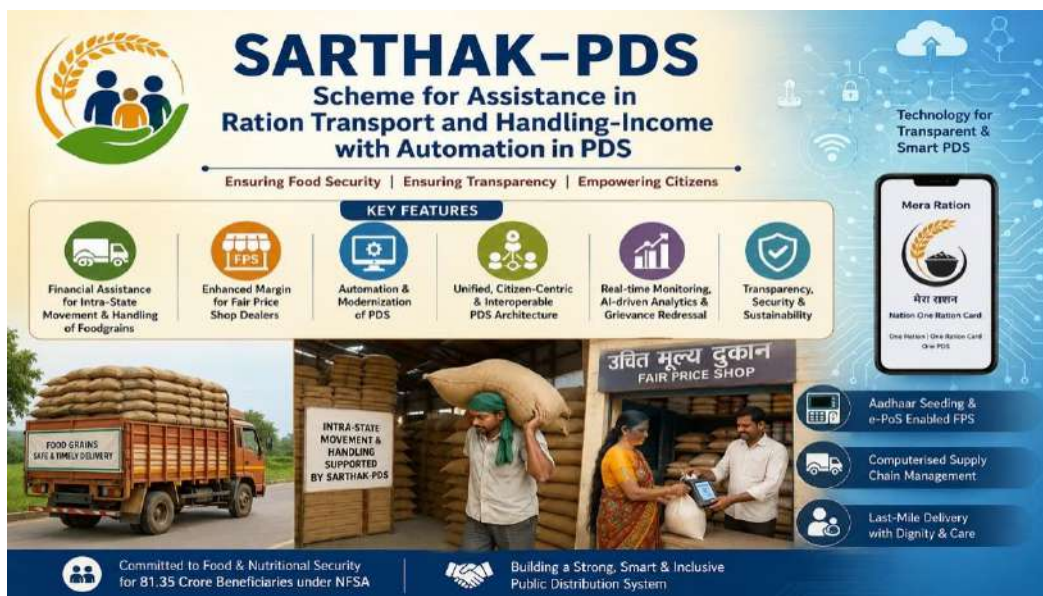
Context:

- The Cabinet Committee on Economic Affairs (CCEA), chaired by Narendra Modi, has approved the continuation and integration of public distribution programs into an umbrella scheme called SARTHAK-PDS.

About SARTHAK-PDS

What It Is?

- Scheme for Assistance in Ration Transport and Handling-Income with Automation in PDS (SARTHAK-PDS) is a newly consolidated, technology-driven umbrella welfare programme.
- It integrates two major ongoing public distribution components to eliminate administrative fragmentation and strengthen statutory implementation of the National Food Security Act, 2013 (NFSA):
 - Assistance to State Agencies for intra-State movement of foodgrains and FPS dealers' margin under NFSA.
 - Scheme for Modernization and Reforms through Technology in Public Distribution System (SMART PDS).



Nodal Agency

- Department of Food and Public Distribution, Ministry of Consumer Affairs, Food and Public Distribution, Government of India.

Aim

- To achieve absolute last-mile food delivery security by providing assured financial backing for:
 - Transport of foodgrains.
 - Fair Price Shop (FPS) dealer margins.

Key Features

Financial Structural Assistance

- Revises and streamlines Central financial assistance to meet operational expenditures incurred by States and UTs for:
 - Intra-state grain handling.
 - Storage.
 - Transport.

Enhanced FPS Dealer Economics

- Guarantees higher and standardized dealer commissions linked with mandatory automation frameworks.
- Promotes ease of doing business and sustainability of local ration shops.

Advanced Technological Core

- Optimizes daily PDS operations through integration of new-age technologies.

Artificial Intelligence (AI) & Machine Learning (ML)

- Used for:
 - Predictive supply-chain tracking.
 - Identifying systemic diversions.
 - Algorithmic fraud detection.

Natural Language Processing (NLP)

- Enables:
 - Multi-lingual automated interactive voice responses.
 - Grievance registration systems for beneficiaries.

Blockchain Technology

- Creates unalterable ledger entries tracking grain allocations from:
 - Central warehouses to individual beneficiaries.
- Ensures extreme security and transparency.

AI-enabled Modules

- Three major AI-enabled modules:
 - NIRMAL.
 - ASHA.
 - SAKSHAM.

Unified Data Architecture

- Mandates standardized interoperable database infrastructure across all 36 States and UTs.
- Integrates existing platforms such as:
 - IM-PDS.
 - Mera Ration.
 - Anna Mitra.
 - Anna Sahayata.

State Command Control Centres

- Establishes centralized state-level control hubs for:
 - Real-time oversight of supply chain movement.
 - Inventory monitoring.
 - Operational e-PoS (Electronic Point of Sale) devices.

ISO-Certified Process Quality

- Enforces standardized operational guidelines across supply depots.
- Ensures:
 - Process transparency.
 - Material safety.
 - Institutional accountability.